



Thaw and Culture Details

Cell Line Name	LUEL7996i-2
WiCell Lot Number	WB66935
Provider	Luebeck University, Dr. Christine Klein
Banked By	WiCell
Thaw and Culture Recommendations	WiCell recommends thawing 1 vial into 3 wells of a 6 well plate.
Culture Platform	Feeder Independent
	Medium: mTeSR™1
	Matrix: Matrigel®
Protocol	WiCell Feeder Independent mTeSR™1 Protocol
Passage Number	p8 These cells were cultured for 7 passages prior to freeze and post colony picking. WiCell adds +1 to the passage number at freeze to best represent what the overall passage number of the cells at thaw. Plated cells at thaw should be labeled passage 8.
Date Vialied	21-October-2018
Vial Label	LUEL7996i-2 p8 WB66935
Biosafety and Use Information	Appropriate biosafety precautions should be followed when working with these cells. The end user is responsible for ensuring that the cells are handled and stored in an appropriate manner. WiCell is not responsible for damages or injuries that may result from the use of these cells. Cells distributed by WiCell are intended for research purposes only and are not intended for use in humans.

Testing Performed by WiCell

Test Description	Test Provider	Test Method	Test Specification	Result
Karyotype by G-banding	WiCell	SOP-CH-003	Expected karyotype	See Report
Post-Thaw Viable Cell Recovery	WiCell	SOP-CH-305	≥ 15 Undifferentiated Colonies, ≤ 30% Differentiation and recoverable attachment after passage	Pass
Identity by STR	UW Translational Research Initiatives in Pathology Laboratory	PowerPlex 16 HS System by Promega	Defines profile	Pass
Sterility	Steris	ST/07	Negative	Pass
Mycoplasma	WiCell	SOP-QU-004	Negative	Pass

Testing Reported by Provider

The provider has provided the following testing and results for this cell line. If available, a link to the relevant publication is provided on the cell line specific web page on the WiCell website.

Test Description	Result	Report
HIV, HBV, and HCV Screening	Negative	Report not available



Approval Date	Quality Assurance Approval
04-January-2019	<p style="text-align: right;">1/4/2019</p> <p>X JKG</p> <hr/> <p><small>WiCell Quality Assurance Signed by: Gay, Jenna</small></p>

Date Reported: Saturday, November 17, 2018

Cell Line Sex: Female

Cell Line: LUEL7996i-2-WB66935 14079

Reason for Testing: Lot release

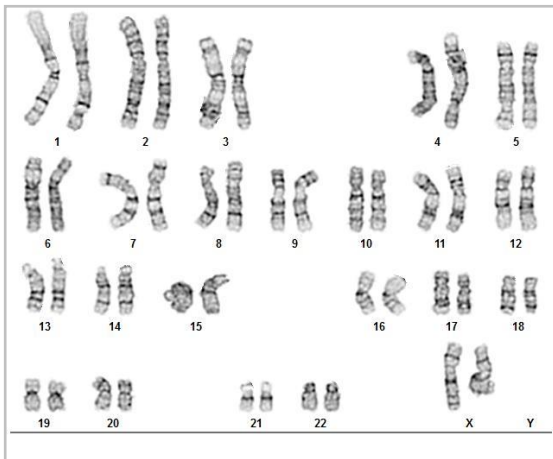
Passage#: 18

Date of Sample: 11/8/2018

Investigator: [REDACTED], WiCell

Specimen: Human IPS

Results: 46,XX



Cell: 76

Slide: G03

Slide Type: Karyotype

Total Counted: 20

Total Analyzed: 8

Total Karyogrammed: 4

Band Resolution: 450 - 550

Interpretation:

This is a normal karyotype; no clonal abnormalities were detected at the stated band level of resolution.

Completed by: [REDACTED], CG(ASCP)

Reviewed and Interpreted by: [REDACTED] PhD, FACMG

Date: _____ **Sent By:** _____ **Sent To:** _____ **QC Review By:** _____

Limitations: This assay allows for microscopic visualization of numerical and structural chromosome abnormalities. The size of structural abnormality that can be detected is >3-10Mb, dependent upon the G-band resolution obtained from this specimen. For the purposes of this report, band level is defined as the number of G-bands per haploid genome. It is documented here as "band level", i.e., the range of bands determined from the four karyograms in this assay. Detection of heterogeneity of clonal cell populations in this specimen (i.e., mosaicism) is limited by the number of metaphase cells examined, documented here as "# of cells counted".

This assay was conducted solely for listed investigator/institution. The results of this assay are for research use only. Unless otherwise mutually agreed in writing, the services provided to you hereunder by WiCell Research Institute, Inc. ("WiCell") are governed solely by WiCell's Terms and Conditions of Service, found at www.wicell.org/privacyandterms. Any terms you may attach to a purchase order or other document that are inconsistent, add to, or conflict with WiCell's Terms and Conditions of Service are null and void and of no legal force or effect.



HISTOLOGY - IHC - MOLECULAR - IMAGING

Department of Pathology and Laboratory Medicine
TRIP Laboratory (Molecular)
<https://research.pathology.wisc.edu/trip/>
(608) 265-9168

Short Tandem Repeat Analysis



Your Lab Partner

characterization@wicell.org
(608) 316-4145

Sample Report:

14141-STR
Sample Name on Tube: 14141-STR
113.1 ng/μL, (A260/280=1.85)
Sample Type: Cells
Cell Count: ~2 million cells

Requestor:

WiCell Research Institute
Quality Assurance Department

Receive Date: 12/17/18

Report Sent: 12/21/18
Assay Date: 12/18/18
File Name: STR 181218 wmr
Report Date: 12/21/18

STR Locus	STR Genotype Repeat #	STR Genotype
FGA	16-18,18.2,19,19.2,20,20.2,21,21.2,22, 22.2, 23, 23.2, 24, 24.2, 25, 25.2, 26-30, 31.2, 43.2, 44.2,45.2, 46.2	Identifying information has been redacted to protect donor confidentiality. If more information is required, please, contact WiCell's Technical Support .
TPOX	6-13	
D8S1179	7-18	
vWA	10-22	
Amelogenin	X,Y	
Penta_D	2.2, 3.2, 5, 7-17	
CSF1PO	6-15	
D16S539	5, 8-15	
D7S820	6-14	
D13S317	7-15	
D5S818	7-16	
Penta_E	5-24	
D18S51	8-10, 10.2, 11-13, 13.2, 14-27	
D21S11	24,24.2,25,25.2,26-28,28.2,29,29.2, 30, 30.2,31, 31.2,32,32.2,33,33.2, 34,34.2,35,35.2,36-38	
TH01	4-9,9.3,10-11,13.3	
D3S1358	12-20	

Results: Based on the 14141-STR cells submitted by WiCell QA dated and received on 12/17/18, this sample (Label on Tube: 14141-STR) defines the STR profile of the human stem cell line LUEL7996i-2 comprising 26 allelic polymorphisms across the 15 STR loci analyzed.

Interpretation: No STR polymorphisms other than those corresponding to the human LUEL7996i-2 stem cell line were detected and the concentration of DNA required to achieve an acceptable STR genotype (signal/noise) was equivalent to that required for the standard procedure (~1 ng/amplification reaction) from human genomic DNA. This result suggests that the 14141-STR sample submitted corresponds to the LUEL7996i-2 stem cell line and was not contaminated with any other human stem cells or a significant amount of mouse feeder layer cells.

Sensitivity: Sensitivity limits for detection of STR polymorphisms unique to either this or other human stem cell lines is ~2-5%.

X *RMB*

Digitally Signed on 12/21/18

X *WMR*

Digitally Signed on 12/21/18

BA
TRIP Laboratory, Molecular

, PhD, Director / Co-Director
UWHC Molecular Diagnostics Laboratory / UWSPH TRIP Laboratory

Testing was accomplished by analysis of human genetic polymorphisms at STR loci. This methodology has not yet been approved by the FDA and is for investigational use only. Acknowledge TRIP in your publications, posters & presentations. For details, see: <http://www.pathology.wisc.edu/research/trip/acknowledging> Unless otherwise mutually agreed in writing, the services provided to you hereunder by WiCell Research Institute, Inc. ("WiCell") are governed solely by WiCell's Terms and Conditions of Service, found at <https://www.wicell.org/media.acux/ca76d97c-862a-43f3-b02a-ab2d1e619100>. Any terms you may attach to a purchase order or other document that are inconsistent, add to, or conflict with WiCell's Terms and Conditions of Service are null and void and of no legal force or effect.

Native Product Sterility Report



WiCell
504 S Rosa Rd, Rm 101
Madison, WI 53719

SAMPLE #: 18102104
DATE RECEIVED: 25-Oct-18
TEST INITIATED: 02-Nov-18
TEST COMPLETED: 16-Nov-18

SAMPLE NAME / DESCRIPTION: STAN140i-243C1 D838122 14061
STAN204i-448C1 D844534 14062
LUEL8318i-2 WB66927 14063
LUEL7149i-2 WB66926 14064
LUEL8364i-5 WB66933 14065
STAN096i-102C6 D844680 14066
STAN095i-102C4 D844677 14067
STAN205i-448C2 D844537 14068
LUEL7996i-2 WB66935 14069
WC007i-FX13-2 WB66934 14070

UNIQUE IDENTIFIER: NA
PRODUCT REGISTRATION: Other: Human iPS cells

TEST RESULTS:

# Tested	# Positives (Growth)	- Control
10	0	2 Negatives

TEST SUMMARY:

# Samples	Media Type	Volume (mL)	Incubation Temperature (° C)	Incubation Duration (Days)
10	TSB	40	20 - 25	14
10	FTG	40	30 - 35	14

REFERENCE: Processed according to LAB-003: Sterility Test Procedure
METHOD VALIDATION / PD #: 000053
TEST METHODOLOGY: USP - Direct Transfer

COMMENTS: NA

REVIEWED BY

DATE 16 NOV 18

Specific test results may not be indicative of the characteristics of any other samples from the same lot or similar lots. This test report shall not be reproduced, except in full, without prior written approval. Liability is limited to the costs of the tests.



Mycoplasma Detection Assay Report

Testing Performed by WiCell
Lot Release Testing
November 08, 2018

FORM SOP-QU-004.01
Version G Edition 02
Reported by: AP
Reviewed by: JB
BD Monolight 180

#	Sample Name	Reading A		A Ave	Reading B		B Ave	Ratio B/A	Result	Comments/Suggestions
		RLU1	RLU2		RLU1	RLU2				
1	LUEL7996i-2-WB66935 14079	187	186	186.5	74	76	75	0.40	Negative	
2	Positive (+) Control	373	375	374	43003	43090	43047	115.10	Positive	
3	Negative (-) Control	687	701	694	97	83	90	0.13	Negative	

