



## Thaw and Culture Details

Cell Line Name	<b>LUEL8364i-1</b>
WiCell Lot Number	<b>WB66922</b>
Provider	Luebeck University, Dr. Christine Klein
Banked By	WiCell
Thaw and Culture Recommendations	WiCell recommends thawing 1 vial into 3 wells of a 6 well plate.
Culture Platform	Feeder Independent
	Medium: mTeSR™1
	Matrix: Matrigel®
Protocol	WiCell Feeder Independent mTeSR™1 Protocol
Passage Number	p22 These cells were cultured for 21 passages prior to freeze and post colony picking. WiCell adds +1 to the passage number at freeze to best represent what the overall passage number of the cells at thaw. Plated cells at thaw should be labeled passage 21.
Date Vialied	20-September-2018
Vial Label	LUEL8364i-1 p22 WB66922
Biosafety and Use Information	Appropriate biosafety precautions should be followed when working with these cells. The end user is responsible for ensuring that the cells are handled and stored in an appropriate manner. WiCell is not responsible for damages or injuries that may result from the use of these cells. Cells distributed by WiCell are intended for research purposes only and are not intended for use in humans.

## Testing Performed by WiCell

Test Description	Test Provider	Test Method	Test Specification	Result
Karyotype by G-banding	WiCell	SOP-CH-003	Expected karyotype	See Report
Post-Thaw Viable Cell Recovery	WiCell	SOP-CH-305	≥ 15 Undifferentiated Colonies, ≤ 30% Differentiation and recoverable attachment after passage	Pass
Identity by STR	UW Translational Research Initiatives in Pathology Laboratory	PowerPlex 16 HS System by Promega	Defines profile	Pass
Sterility	Steris	ST/07	Negative	Pass
Mycoplasma	WiCell	SOP-QU-004	Negative	Pass

## Testing Reported by Provider

The provider has provided the following testing and results for this cell line. If available, a link to the relevant publication is provided on the cell line specific web page on the WiCell website.

Test Description	Result	Report
HIV, HBV, and HCV Screening	Negative	Report not available



Approval Date	Quality Assurance Approval
20-November-2018	<p style="text-align: right;">11/20/2018</p> <p>X JKG</p> <hr/> <p><small>WiCell Quality Assurance Signed by: Gay, Jenna</small></p>

**Date Reported:** Monday, October 29, 2018

**Cell Line:** LUEL8364i-1-WB66922 14054

**Passage#:** 22

**Date of Sample:** 10/23/2018

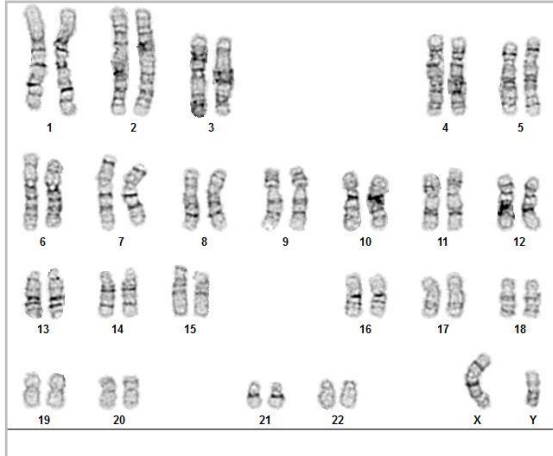
**Specimen:** Human IPS

**Results:** 46,XY

**Cell Line Sex:** Male

**Reason for Testing:** Lot Release Testing

**Investigator:** [REDACTED], WiCell



**Cell:** 5

**Slide:** G02

**Slide Type:** Karyotype

**Total Counted:** 20

**Total Analyzed:** 8

**Total Karyogrammed:** 4

**Band Resolution:** 425 - 475

### Interpretation:

**This is a normal karyotype; no clonal abnormalities were detected at the stated band level of resolution.**

**Completed by:** [REDACTED], CG(ASCP)

**Reviewed and Interpreted by:** [REDACTED], PhD, FACMG

**Date:** \_\_\_\_\_ **Sent By:** \_\_\_\_\_ **Sent To:** \_\_\_\_\_ **QC Review By:** \_\_\_\_\_

*Limitations: This assay allows for microscopic visualization of numerical and structural chromosome abnormalities. The size of structural abnormality that can be detected is >3-10Mb, dependent upon the G-band resolution obtained from this specimen. For the purposes of this report, band level is defined as the number of G-bands per haploid genome. It is documented here as "band level", i.e., the range of bands determined from the four karyograms in this assay. Detection of heterogeneity of clonal cell populations in this specimen (i.e., mosaicism) is limited by the number of metaphase cells examined, documented here as "# of cells counted".*

*This assay was conducted solely for listed investigator/institution. The results of this assay are for research use only. Unless otherwise mutually agreed in writing, the services provided to you hereunder by WiCell Research Institute, Inc. ("WiCell") are governed solely by WiCell's Terms and Conditions of Service, found at [www.wicell.org/privacyandterms](http://www.wicell.org/privacyandterms). Any terms you may attach to a purchase order or other document that are inconsistent, add to, or conflict with WiCell's Terms and Conditions of Service are null and void and of no legal force or effect.*

**Sample Report:**

14054-STR

**Sample Name on Tube:** 14054-STR64.6 ng/ $\mu$ L, (A260/280=1.79)**Sample Type:** Cells**Cell Count:** ~2 million cells**Requestor:**

WiCell Research Institute

Quality Department

**Sample Date:** N/A**Receive Date:** 11/05/18**Assay Date:** 11/06/18**File Name:** STR 181106 wmr**Report Date:** 11/08/18

STR Locus	STR Genotype Repeat #	STR Genotype
FGA	16-18,18.2,19,19.2,20,20.2,21,21.2,22, 22.2, 23, 23.2, 24, 24.2, 25, 25.2, 26-30, 31.2, 43.2, 44.2,45.2, 46.2	Identifying information has been redacted to protect donor confidentiality. If more information is required, please, contact <a href="#">WiCell's Technical Support</a> .
TPOX	6-13	
D8S1179	7-18	
vWA	10-22	
Amelogenin	X,Y	
Penta_D	2.2, 3.2, 5, 7-17	
CSF1PO	6-15	
D16S539	5, 8-15	
D7S820	6-14	
D13S317	7-15	
D5S818	7-16	
Penta_E	5-24	
D18S51	8-10, 10.2, 11-13, 13.2, 14-27	
D21S11	24,24.2,25,25.2,26-28,28.2,29,29.2, 30, 30.2,31, 31.2,32,32.2,33,33.2, 34,34.2,35,35.2,36-38	
TH01	4-9,9.3,10-11,13.3	
D3S1358	12-20	

**Results:** Based on the 14054-STR cells submitted by WiCell QA dated and received on 11/05/18, this sample (Label on Tube: 14054-STR) defines the STR profile of the human stem cell line LUEL8364i-1 comprising 26 allelic polymorphisms across the 15 STR loci analyzed.

**Interpretation:** No STR polymorphisms other than those corresponding to the human LUEL8364i-1 stem cell line were detected and the concentration of DNA required to achieve an acceptable STR genotype (signal/noise) was equivalent to that required for the standard procedure (~1 ng/amplification reaction) from human genomic DNA. This result suggests that the 14054-STR sample submitted corresponds to the LUEL8364i-1 stem cell line and was not contaminated with any other human stem cells or a significant amount of mouse feeder layer cells.

**Sensitivity:** Sensitivity limits for detection of STR polymorphisms unique to either this or other human stem cell lines is ~2-5%.



Digitally Signed on 11/12/18

[Redacted], BA  
TRIP Laboratory, Molecular

Digitally Signed on 11/12/18

[Redacted], PhD, Director / Co-Director  
UWHC Molecular Diagnostics Laboratory / UWSMPH TRIP Laboratory

Testing was accomplished by analysis of human genetic polymorphisms at STR loci. This methodology has not yet been approved by the FDA and is for investigational use only.

Acknowledge TRIP in your publications, posters & presentations. For details, see: <http://www.pathology.wisc.edu/research/trip/acknowledging>

TRIP agrees to maintain the confidentiality of any information provided to it in connection with its performance of this STR analysis on the same conditions as set forth in paragraph 2 of WiCell's Terms and Conditions of Service (<http://www.wicell.org/media.acux/1a429b84-2b54-44a4-8ad8-5c05db93dd8a>).

# Native Product Sterility Report



WiCell  
504 S Rosa Rd, Rm 101  
Madison, WI 53719

SAMPLE #: 18100500  
DATE RECEIVED: 04-Oct-18  
TEST INITIATED: 17-Oct-18  
TEST COMPLETED: 31-Oct-18

SAMPLE NAME / DESCRIPTION: STAN099i-108C2 DB44602 14039  
CREM027i-SS41-1 WB66904 14040  
LUEL8360i-5 WB66921 14041  
LUEL8364i-1 WB66922 14042  
LUEL7756i-4 WB66923 14043  
LUEL7996i-10 WB66924 14044  
LUEL7994i-2 WB66925 14045  
LUEL7756i-2 WB66890 14046  
WISC015i-SC7 WB66893 14048  
STAN100i-108C4 DB44605 14052

UNIQUE IDENTIFIER: NA  
PRODUCT REGISTRATION: Other: Human iPS cells

### TEST RESULTS:

# Tested	# Positives (Growth)	- Control
10	0	2 Negatives

### TEST SUMMARY:

# Samples	Media Type	Volume (mL)	Incubation Temperature (° C)	Incubation Duration (Days)
10	TSB	40	20 - 25	14
10	FTG	40	30 - 35	14

REFERENCE: Processed according to LAB-003: Sterility Test Procedure  
METHOD VALIDATION / PD #: 000053  
TEST METHODOLOGY: USP - Direct Transfer

COMMENTS: NA

REVIEWED BY

DATE

06NOV18

Specific test results may not be indicative of the characteristics of any other samples from the same lot or similar lots. This test report shall not be reproduced, except in full, without prior written approval. Liability is limited to the costs of the tests.



# Mycoplasma Detection Assay Report

Testing Performed by WiCell

Lot Release Testing

October 25, 2018

FORM SOP-QU-004.01

Version G Edition 02

Reported by: AP

Reviewed by: JB

BD Monolight 180

#	Sample Name	Reading A		A Ave	Reading B		B Ave	Ratio B/A	Result	Comments/Suggestions
		RLU1	RLU2		RLU1	RLU2				
1	LUEL8364i-1-WB66922 14054	171	167	169	60	63	61.5	0.36	Negative	
2	Positive (+) Control	414	450	432	32534	32857	32696	75.68	Positive	
3	Negative (-) Control	779	802	790.5	93	97	95	0.12	Negative	

