



Thaw and Culture Details

Cell Line Name	UCSD233i-SAD2-2
WiCell Lot Number	DB26810
Provider	University of California, San Diego – Laboratory of Dr. Lawrence Goldstein
Banked By	University of California, San Diego – Laboratory of Dr. Lawrence Goldstein
Thaw and Culture Recommendations	WiCell recommends thawing 1 vial into 5 wells of a 6 well plate.
Culture Platform	Feeder Dependent
	Medium: hESC Medium (KOSR)
	Matrix: MEF
Protocol	WiCell Feeder Dependent Protocol
Passage Number	p14 These cells were cultured for 13 passages prior to freeze and post reprogramming. The Provider adds +1 to the passage number to best represent the overall passage number of the cells at thaw.
Date Vialied	15-June-2015
Vial Label	iPS SAD2.2 p14 6/15/15 ch thaw in 6 well
Biosafety and Use Information	Appropriate biosafety precautions should be followed when working with these cells. The end user is responsible for ensuring that the cells are handled and stored in an appropriate manner. WiCell is not responsible for damages or injuries that may result from the use of these cells. Cells distributed by WiCell are intended for research purposes only and are not intended for use in humans.

Testing Performed by WiCell

Test Description	Test Provider	Test Method	Test Specification	Result
Karyotype by G-banding	WiCell	SOP-CH-003	Expected karyotype	Fail
	Results from report: This is a normal karyotype. No clonal abnormalities were detected at the stated band level of resolution.			
Post-Thaw Viable Cell Recovery	WiCell	SOP-CH-305	Recoverable attachment after passage	Pass
Identity by STR	UW Translational Research Initiatives in Pathology Laboratory	PowerPlex 16 HS System by Promega	Defines Profile	Pass
Sterility	Biotest Laboratories	ST/07	Negative	Pass

Testing Reported by Provider

For more information, publication and dbGaP links, where available, are provided on the cell line specific web page on the WiCell website.

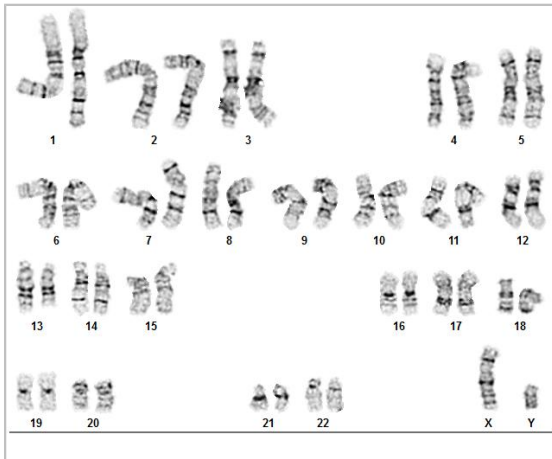
Test Description	Method	Result
Genetic Analysis	G-Band Karyotype	Maintained euploid karyotype
Pluripotency	FACS	Expressed the pluripotency-associated proteins NANOG and TRA1-81. See the publication for Mean % TRA1-81.
Teratoma	Injected into nude rats	Differentiated into cells of ectodermal, mesodermal, and endodermal lineages in vitro.



Approval Date	Quality Assurance Approval
30-June-2016	<p style="text-align: right;">9/6/2017</p> <p>X AMK _____ AMK Quality Assurance Signed by: Klade, Anjelica</p>

Date Reported: Friday, August 18, 2017
Cell Line: UCSD233i-SAD2-2-DB26810 12694
Passage#: 14
Date of Sample: 8/8/2017
Specimen: Human iPSC
Results: 46,XY

Cell Line Gender: Male
Reason for Testing: lot release testing
Investigator: [REDACTED], WiCell CDM



Cell: 32
Slide: G01
Slide Type: Karyotype
Total Counted: 20
Total Analyzed: 8
Total Karyogrammed: 4
Band Resolution: 375 - 500

Interpretation:

This is a normal karyotype. No clonal abnormalities were detected at the stated band level of resolution.

Completed by: [REDACTED], CG(ASCP)
Reviewed and Interpreted by: [REDACTED], PhD, FACMG
A signed copy of this report is available upon request.

Date: _____ **Sent By:** _____ **Sent To:** _____ **QC Review By:** _____

Limitations: This assay allows for microscopic visualization of numerical and structural chromosome abnormalities. The size of structural abnormality that can be detected is >3-10Mb, dependent upon the G-band resolution obtained from this specimen. For the purposes of this report, band level is defined as the number of G-bands per haploid genome. It is documented here as "band level", i.e., the range of bands determined from the four karyograms in this assay. Detection of heterogeneity of clonal cell populations in this specimen (i.e., mosaicism) is limited by the number of metaphase cells examined, documented here as "# of cells counted".

This assay was conducted solely for listed investigator/institution. The results may not be relied upon by any other party without the prior written consent of the Director of the WiCell Cytogenetics Laboratory. The results of this assay are for research use only. If the results of this assay are to be used for any other purpose, contact the Director of the WiCell Cytogenetics Laboratory.

Unless otherwise mutually agreed in writing, the services provided to you hereunder by WiCell Research Institute, Inc. ("WiCell") are governed solely by WiCell's Terms and Conditions of Service, found at www.wicell.org/privacyandterms. Any terms you may attach to a purchase order or other document that are inconsistent, add to, or conflict with WiCell's Terms and Conditions of Service are null and void and of no legal force or effect.

Short Tandem Repeat Analysis

Department of Pathology and Laboratory Medicine
TRIP Laboratory (Molecular)
<http://www.pathology.wisc.edu/research/trip>

Sample Report:

12694-STR
Sample Name on Tube: 12694-STR
48.5 ng/μL, (A260/280=1.94)
Sample Type: Cells
Cell Count: ~2 million cells

Requestor:

WiCell Research Institute
Quality Department

Sample Date: N/A

Receive Date: 08/14/17
Assay Date: 08/16/17
File Name: STR 170817 wmr
Report Date: 08/21/17

STR Locus	STR Genotype Repeat #	STR Genotype
FGA	16-18,18.2,19,19.2,20,20.2,21,21.2,22, 22.2, 23, 23.2, 24, 24.2, 25, 25.2, 26-30, 31.2, 43.2, 44.2,45.2, 46.2	Identifying information has been redacted to protect donor confidentiality. If more information is required, please, contact WiCell's Technical Support .
TPOX	6-13	
D8S1179	7-18	
vWA	10-22	
Amelogenin	X,Y	
Penta_D	2.2, 3.2, 5, 7-17	
CSF1PO	6-15	
D16S539	5, 8-15	
D7S820	6-14	
D13S317	7-15	
D5S818	7-16	
Penta_E	5-24	
D18S51	8-10, 10.2, 11-13, 13.2, 14-27	
D21S11	24,24.2,25,25.2,26-28,28.2,29,29.2, 30, 30.2,31, 31.2,32,32.2,33,33.2, 34,34.2,35,35.2,36-38	
TH01	4-9,9.3,10-11,13.3	
D3S1358	12-20	

Results: Based on the 12694-STR cells submitted by WiCell QA dated and received on 08/14/17, this sample (Label on Tube: 12694-STR) defines the STR profile of the human stem cell line UCSD233i-SAD2-2 comprising 27 allelic polymorphisms across the 15 STR loci analyzed.

Interpretation: No STR polymorphisms other than those corresponding to the human UCSD233i-SAD2-2 stem cell line were detected and the concentration of DNA required to achieve an acceptable STR genotype (signal/noise) was equivalent to that required for the standard procedure (~1 ng/amplification reaction) from human genomic DNA. This result suggests that the 12694-STR sample submitted corresponds to the UCSD233i-SAD2-2 stem cell line and was not contaminated with any other human stem cells or a significant amount of mouse feeder layer cells.

Sensitivity: Sensitivity limits for detection of STR polymorphisms unique to either this or other human stem cell lines is ~2-5%.

X *RMB*
Digitally Signed on 08/23/17

X *WMR*
Digitally Signed on 08/23/17

██████████
TRIP Laboratory, Molecular

██████████, PhD, Director / Co-Director
UWHC Molecular Diagnostics Laboratory / UWSMPH TRIP Laboratory

Testing was accomplished by analysis of human genetic polymorphisms at STR loci. This methodology has not yet been approved by the FDA and is for investigational use only. Acknowledge TRIP in your publications, posters & presentations. For details, see: <http://www.pathology.wisc.edu/research/trip/acknowledging>
TRIP agrees to maintain the confidentiality of any information provided to it in connection with its performance of this STR analysis on the same conditions as set forth in paragraph 2 of WiCell's Terms and Conditions of Service (<http://www.wicell.org/media.acux/1a429b84-2b54-44a4-8ad8-5c05db93dd8a>).

Native Product Sterility Report



WiCell
504 S Rosa Rd, Rm 101
Madison, WI 53719

SAMPLE #: 17071725
DATE RECEIVED: 27-Jul-17
TEST INITIATED: 31-Jul-17
TEST COMPLETED: 14-Aug-17

SAMPLE NAME / DESCRIPTION: HVRDi001-A-WB66391 12659
JHU024i-WB66445 12660
WA09-WB66444 12661
WA09-WB66446 12662
UCSD005i-43-1-WB62267 12663
UCSD008i-44-1-WB66286 12664
UCSD036i-4-5-WB65173 12665
UCSD233i-SAD-2-DB26810 12666
UCSD235i-SAD2-4-DB26816 12667
iPS(IMR90)-2-WB66447 12668

UNIQUE IDENTIFIER: NA
PRODUCT REGISTRATION: Human iPS cells

TEST RESULTS:

# Tested	# Positives (Growth)	- Control
10	0	2 Negatives

TEST SUMMARY:

# Samples	Media Type	Volume (mL)	Incubation Temperature (° C)	Incubation Duration (Days)
10	TSB	40	20-25	14
10	FTG	40	30 - 35	14

REFERENCE: Processed according to LAB-003: Sterility Test Procedure
METHOD VALIDATION / PD #: 000053
TEST METHODOLOGY: USP - Direct Transfer

COMMENTS: NA

REVIEWED BY

DATE 15 Aug 17

Specific test results may not be indicative of the characteristics of any other samples from the same lot or similar lots. This test report shall not be reproduced, except in full, without prior written approval. Liability is limited to the costs of the tests.



Mycoplasma Detection Assay Report

Testing Performed by WiCell

Lot Release Testing

August 3, 2017

FORM SOP-QU-004.01

Version F Edition 02

Reported by: KR

Reviewed by: JB

BD Monolight 180

#	Sample Name	Reading A			Reading B			Ratio B/A	Result	Comments/Suggestions
		RLU1	RLU2	Ave	RLU1	RLU2	Ave			
1	UCSD233i-SAD2-2-DB26810 12694	366	373	369.5	192	191	191.5	0.52	Negative	
2	Positive (+) Control	344	392	368	29366	29485	29426	79.96	Positive	
3	Negative (-) Control	662	670	666	81	77	79	0.12	Negative	

